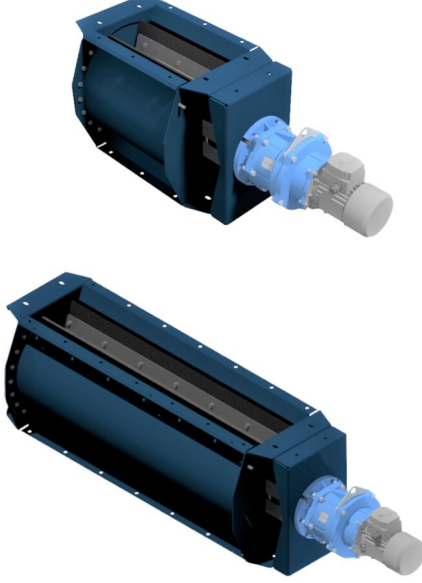


NRSZ dairesel vanalar, tip 4,10,20,30

Toz toplayıcınızdan yanıcı tozların sürekli olarak boşaltılması için



NRSZ tipi dairesel vana iki ayrı sistem arasında malzeme aktarmak için kullanılır. Pnömatik taşıma sistemlerinde boşaltma genelde atmosferik basınçta filtre veya siklondan siloya şeklinde olmalıdır. Bu durum, NRSZ tipi dairesel vana için ideal bir uygulamadır.

Dairesel vana çoğu malzeme türü için kullanılabilir, ancak partikül boyutu 13 x 13 x 13 mm'yi (.5 x .5 x .5 inç) aşmamalıdır. NRSZ tipi dairesel vanalar modüler olup ve ağır çelik levhalardan sağlam bir şekilde imal edilmiştir. Her bir modülün rotoru esnek bir kavrama ile donatılmıştır. Bu durum kullanımda hasar görme olasılığını düşürür ve ünitenin kullanım ömrünü maksimuma taşır. Rotor, giriş ile çıkış arasında etkin bir hava kilidi sağlayan özel lastik contalara sahiptir.

Bu tip dairesel vana St1 ve St2 tipi patlayıcı tozlar için sertifikalı bir versiyondur. NRSZ, ATEX tanımına göre koruyucu bir sistemdir.

St1 tipi patlayıcı tozlar 200 bar m / s'ye kadar Kst değerine sahip olabilir.

St2 tipi patlayıcı tozlar 300 bar m / s'ye kadar Kst değerine sahip olabilir.

Medya	NRSZ dairesel vanalar, tip 4,10,20,30
Ses Düzeyi(dB(A))	< 70
Kurulum	[Outdoor], [Indoor]
Materyal	Ağır çelik levha
Patlayıcı toz için ideal	True
Application	[dust]
Operating Temperature	,-20 ile 40 Derece. C.



NRSZ dairesel vanalar, tip 4,10,20,30

Ağırlık (kg)	Güç (kW)	[model]
50		73008867*
75	0,18	73008868**
75	0,18	73008870**
75	0,18	73008871**
130	0,18	73008875***
130	0,18	73008877***
130	0,18	73008878***
95		73008874****
135	0,75	73008876****
135		73008879****
135		73008880****
221		73008881*****
243	0,75	73008882*****
243		73008883*****
		73009037
312		73008884*****
338	0,75	73008885*****
		73009038
		73009039

*Without motor. Capacity at 100% filling - 1,50m³/h per RPM

**Capacity at 100% filling - 10 m³/h

***Capacity at 100% filling - 24 m³/h

****Without motor. Capacity at 100% filling - 3,5 m³/h per RPM

*****Capacity at 100% filling - 67 m³/h

*****Without motor. Capacity at 100% filling - 7 m³/h per RPM

*****Capacity at 100% filling - 134 m³/h

*****Capacity at 100% filling - 134 m³/h

*****Without motor. Capacity at 100% filling - 10,5 m³/h per RPM

*****Capacity at 100% filling - 201 m³/h

NRSZ dairesel vanalar, tip 4,10,20,30

[accessory]		[partno]
	Rotation sensor for NRS with assembly kit	73008689
	Tool for setting the rotor in NRSZ4/10	73008777

NRSZ dairesel vanalar, tip 4,10,20,30

ATEX limitations NRSZ 4, 10, 20, 30:

Atex limitations

Rotary valve type	P _{red,max} [kPa]		Rotation speed max. [rpm]
	St1 K _{st,max} *=20 MPa·m/s	St2 K _{st,max} *=30 MPa·m/s	
NRSZ 4	25	20	20
NRSZ 10	25	20	20
NRSZ 20	25	20	20
NRSZ 30	25	20	20

*K_{st} for organic dust.

The combustible dust is described by the parameters:

The limit values of the used class of dust St1: K_{st,max}=20 MPa·m/s, MIE ≥13 mJ, MIT ≥430°C (of a dust cloud).

The limit values of the used class of dust St2: K_{st,max}=30 MPa·m/s, MIE ≥2 mJ, MIT ≥520°C (of a dust cloud).

List of Types:

ID	Type model - rpm	Installation zone exterior of NRSZ	Capacity at 100% filling	Motor [kW]	Motor ATEX Marking	Weight [kg]
73008867	NRSZ 4-0	Depends on motor	1,5 m ³ /h per RPM	none	-	50
73008868	NRSZ 4-7	Non-zone	10 m ³ /h	0,18	-	75
73009028	NRSZ 4-20		28 m ³ /h	0,75	-	69
73008874	NRSZ 10-0	Depends on motor	3,5 m ³ /h per RPM	none	-	95
73008875	NRSZ 10-7	Non-zone	24 m ³ /h	0,18	-	130

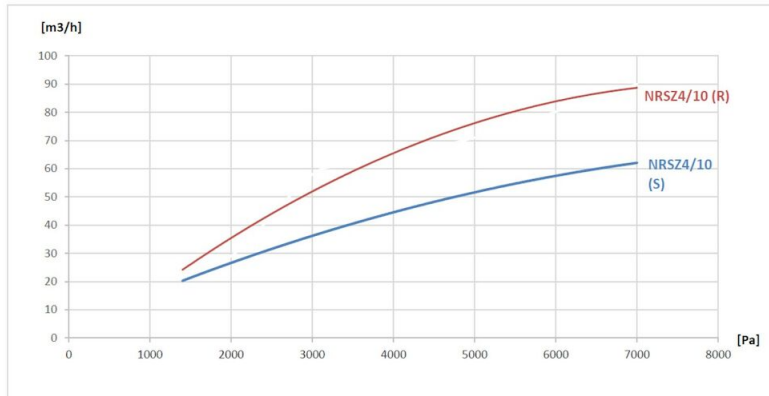
List of Types:

ID	Type model - rpm	Installation zone exterior of NRSZ	Capacity at 100% filling	Motor [kW]	Motor ATEX Marking	Weight [kg]
73008876	NRSZ 10-20		67 m ³ /h	0,75	-	135
73008881	NRSZ 20-0	Depends on motor	7 m ³ /h per RPM	none	-	221
73008882	NRSZ 20-20	Non-zone	134 m ³ /h	0,75	-	243
73008884	NRSZ 30-0	Depends on motor	10,5 m ³ /h per RPM	none	-	312
73008885	NRSZ 30-20	Non-zone	201 m ³ /h	0,75	-	338
73008870	NRSZ 4-7 Cat 2	Zone 21	10 m ³ /h	0,18	II 2D Ex tb IIIC T135°C Db	75
73008871	NRSZ 4-7 Cat 3	Zone 22			II 3D Ex tc IIIB T125°C Dc	75
73009029	NRSZ 4-20 Cat 2	Zone 21	28 m ³ /h	0,75	II 2D Ex tb IIIC T135°C Db	69
73009030	NRSZ 4-20 Cat 3	Zone 22			II 3D Ex tc IIIB T125°C Dc	69
73008877	NRSZ 10-7 Cat 2	Zone 21	24 m ³ /h	0,18	II 2D Ex tb IIIC T135°C Db	130
73008878	NRSZ 10-7 Cat 3	Zone 22			II 3D Ex tc IIIB T125°C Dc	130
73008879	NRSZ 10-20 Cat 2	Zone 21	67 m ³ /h		II 2D Ex tb IIIC T135°C Db	135
73008880	NRSZ 10-20 Cat 3	Zone 22			II 3D Ex tc IIIB T125°C Dc	135
73008883	NRSZ 20-20 Cat 2	Zone 21	134 m ³ /h		II 2D Ex tb IIIC T135°C Db	243

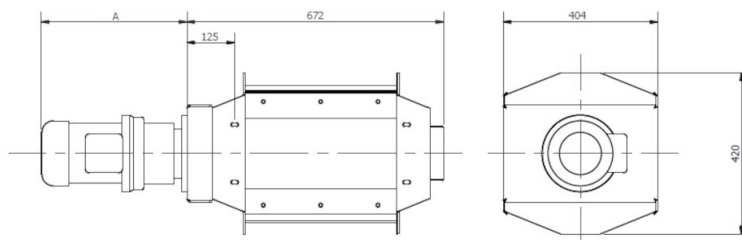
NRSZ dairesel vanalar, tip 4,10,20,30

Leakage

The leakage of the rotary valve during shutdown (S) and during operation (R) depends on the pressure drop over the rotor. See the chart:

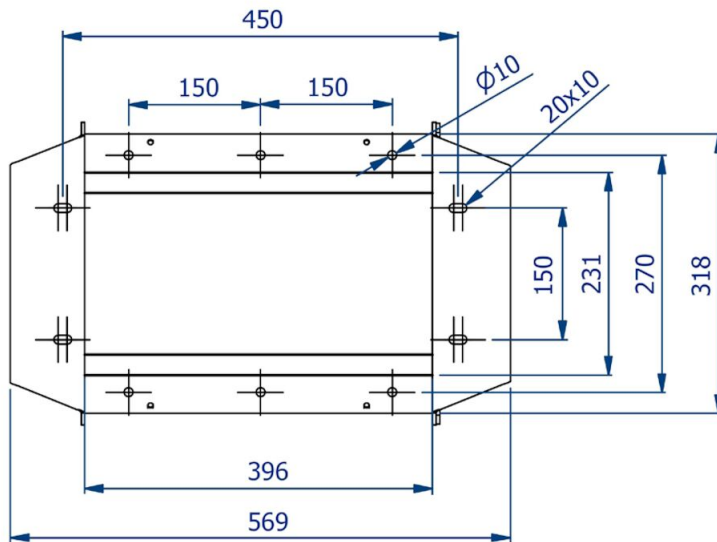


Dimensions NRS 4 / NRSZ 4

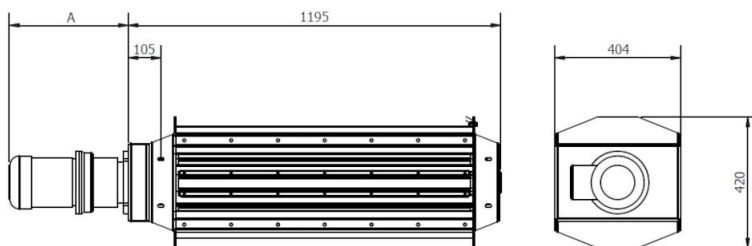


NRSZ dairesel vanalar, tip 4,10,20,30

Dimensions inlet NRS 4 / NRSZ 4

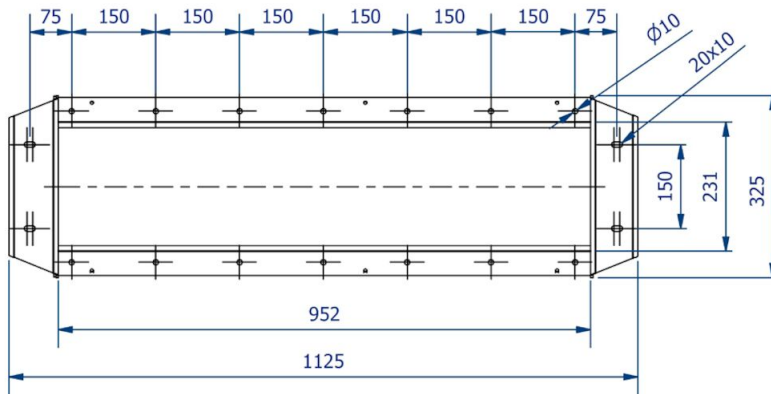


Dimensions NRS 10 / NRSZ 10

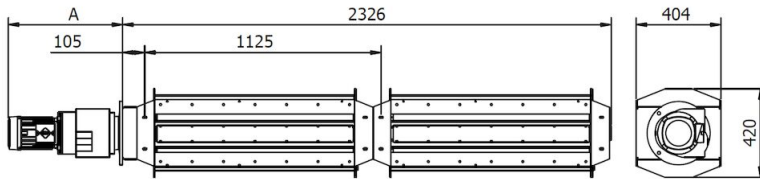


NRSZ dairesel vanalar, tip 4,10,20,30

Dimensions inlet NRS 10 / NRSZ 10



Dimensions NRS 20 / NRSZ 20



Dimensions NRS 30 / NRSZ 30

